



CALIFORNIA SEALANT SOLUTIONS, INC.

Office: 619-596-5863 | Fax: 619-596-5867

P.O. Box 210603, Chula Vista, CA 91921

www.calsealants.com | Lic. 977533, B, C33

Waterproofing – Caulking – Concrete Repair

Who We Are

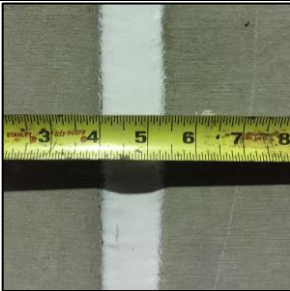
California Sealant Solutions, Inc. is a local San Diego waterproofing and restoration company. With over 50 years of combined experience we provide an array of services to help mitigate your water intrusion issues and aesthetic desires. We have dedicated project and office managers to assist with any scope, large or small. We look forward to doing business with you soon. Thank you.

What We Do

WATERPROOFING



CAULKING



TRAFFIC COATING



AIR BARRIERS



WATERPROOFING

Locations: Below grade building, structure and retaining walls constructed of Lagging, Shotcrete, CMU, Pre-cast, Poured-in-Place, Concrete Panels; Between Slabs, Under Slab on Grade, Elevator Pits, Shower Pan, Planters, Exterior Wall Assemblies, and more.

Applications: Self-Adhered Membranes, Moisture Vapor Barrier, Pre-Applied Bonding Membranes, Bentonite Sheet Membrane, Cementitious & Crystalline, Fluid Applied Elastomeric Waterproofing, Protection Board & Drainage Systems.

Manufacturers: Aquafin, Xypex, Tremco, Carlisle, Grace, Koester, Laticrete, Cetco, Protecto Wrap, Pacific Polymers, WR Meadows, BASF, Sika.

CAULKING

Locations: Concrete Panel Joints, CMU, Control Joints, Expansion Joints, Pour Strips, Windows, Architectural Joints, EIFS, Hardscape Joints, Sidewalk & Walkway Joints, Curbs, Storefronts, Seismic Joints, Plaster Joints, Sawcuts, Metals, Glass, and more.

Applications: Decorative, Fire-Rated, Architectural, Dissimilar to Dissimilar, Custom Colors, Polyurethanes, Silicones, Acrylics, Acoustical, Latex, Epoxy, Security, Compression Seal.

Manufacturers: Pecora, Sika, Dow Corning, GE, Tremco, BASF, Emseal, 3M, Grace, DAP.

TRAFFIC COATING

Locations: Parking Decks, Balconies, Stairs & Landings, Garages & Ramps, Patios and more.

Applications: Vehicular Traffic Coatings, Pedestrian Traffic Coatings, Neighbor-Friendly & Low VOC, Fire-Rated, Sand Broadcast, Heavy-Duty Traffic Coatings.

Manufacturers: Tremco, Pacific Polymers, West Coat, Miracote, Neogard, Sonneborn, BASF, Pecora.

AIR BARRIERS

Locations: Exterior Building and Structure Envelopes over Plywood, CMU, Densglass, Concrete, and more.

Applications: Fluid-Applied & Sheet-Applied Vapor Permeable and Impermeable Air Barriers.

Manufacturers: Tremco, Grace, GE, Dow, Prosoco, Henry, WR Meadows, Pecora.

CONCRETE REPAIR

Locations: Exterior Building, Structure Envelopes, Parking Structures, Balconies, Architectural Features and Historic Restoration.

Applications: Cementitious, Sack-&-Patch, Epoxy Injection, Self-Leveling, Sloping, Build-up, Sound-proofing, Fiber Wraps, Epoxy Strengthening.

Manufacturers: Sika, BASF, WR Meadows, Laticrete, Mapei, Quickcrete, RapidSet, Gypcrete, Aquafin.

